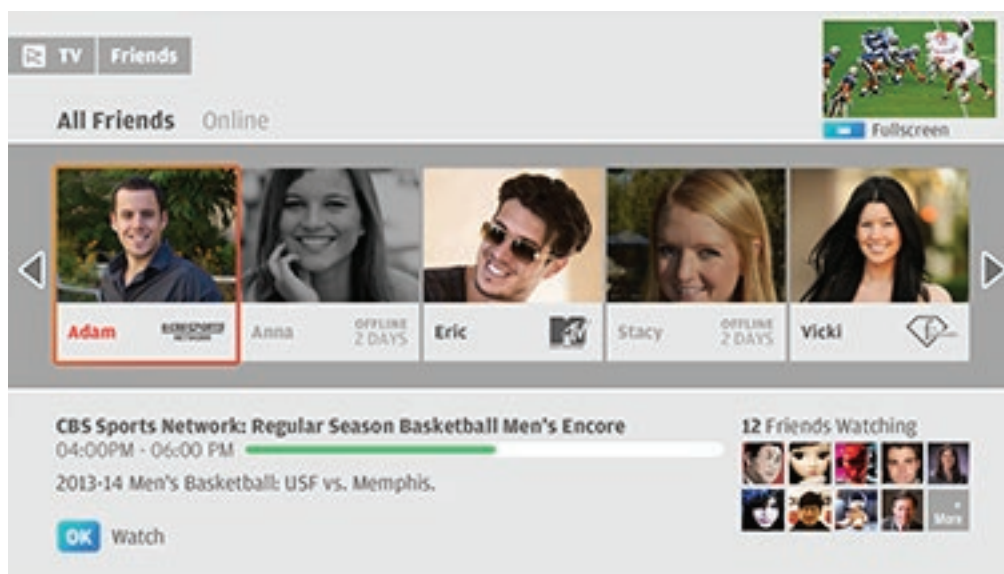


Transform your business with an easy social TV solution. Our unmatched expertise in interactive social TV makes us uniquely positioned to help you get viewers engaged and excited in your content again.

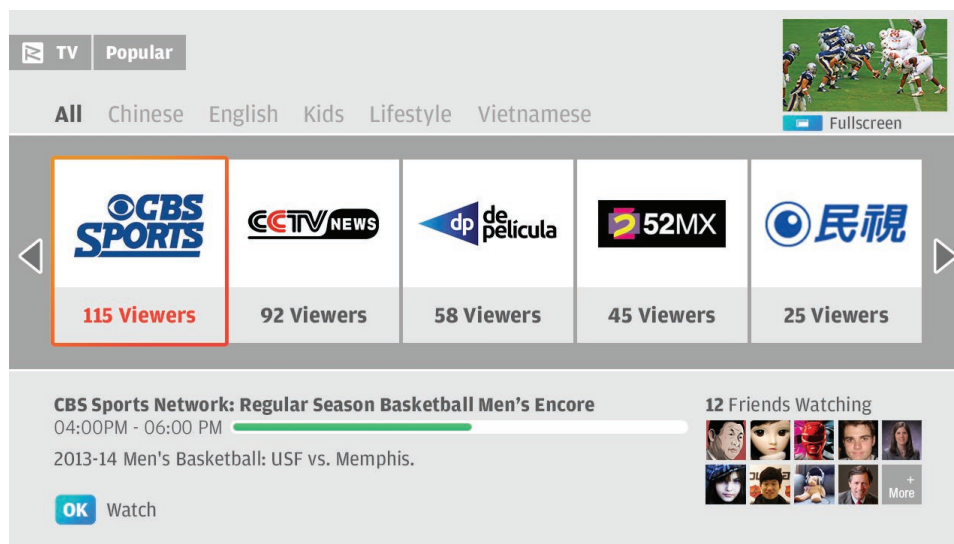
Watch With Friends

- Viewers will love our friends based channel surfing feature, which allows them to flip through channels friends are watching right now, and quickly decide what to watch.
- Easily see friends come online, select shows to watch, and join them in the virtual living room.



Discover New Content

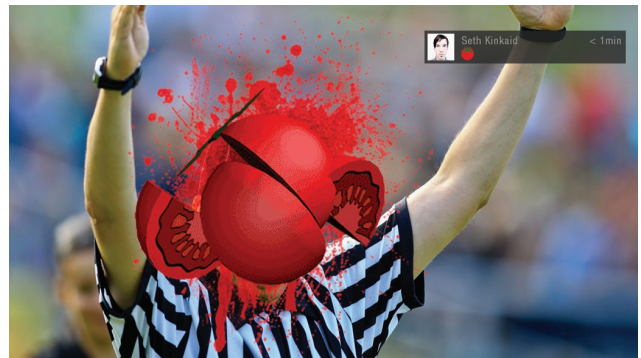
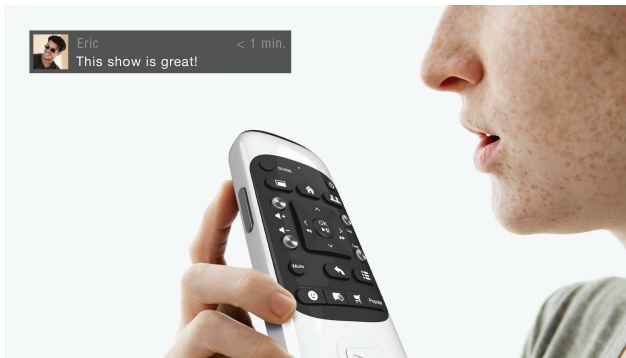
- Find exciting shows to watch by using the content ranking system, which displays the channels with the most social interaction.
- See friend's recommended show lists.



Enter the Virtual Living Room

Chat privately with a friend (one-to-one) or to all your friends using:

- Voice-to-text, which enables viewers to speak into a remote or smartphone and instantly places a text message on your friend's TV.
- Voice chat is a push-to-talk feature that lets viewers talk naturally and be heard through friend's TV.
- Integrated text lets viewers type messages and post instantly on friend's TV.



Share a Laugh or Two

- The built in accelerometer in our remote control lets viewers "throw" funimoticons™ such as tomatoes, pop corn, and all sorts of food at the TV for friends to see.
- Express your feelings to the fullest when a referee makes a call you don't agree with during the big game.



Stay Private

- Viewers can turn on privacy when they want to watch alone or don't feel like being disturbed by friends.
- Select which friends can join the virtual living room.



Don't Miss Out On Social Media

- RelayTV automatically subscribes to Twitter hashtags for the show watched, and displays the tweets in real-time directly on the TV.
- Directly post tweets or messages onto Facebook and Twitter about the content being watched.

